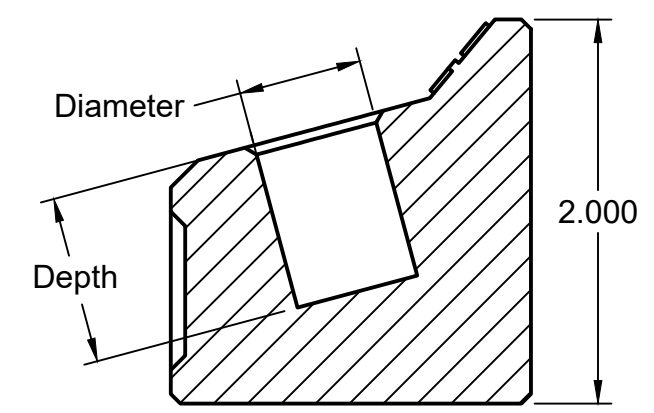
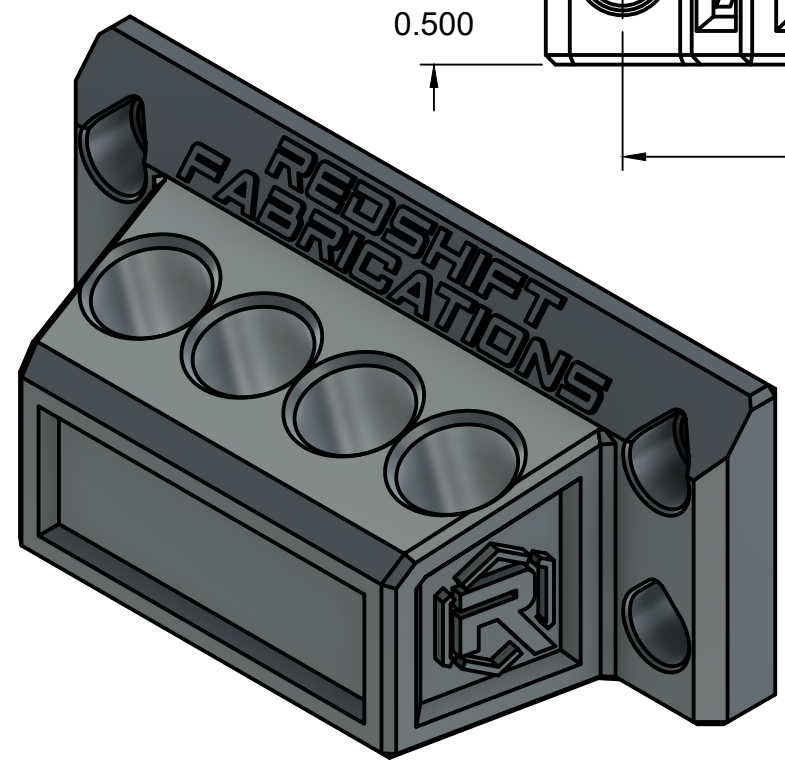


| Part Number | Diameter | Depth |
|-----------------------------------------------------------------|----------|-------|
| 3DP-00307 | 4mm | 12mm |
| 3DP-00308 | 5mm | 12mm |
| 3DP-00309 | 6mm | 12mm |
| 3DP-00310 | 7mm | 16mm |
| 3DP-00311 | 8mm | 16mm |
| 3DP-00312 | 9mm | 16mm |
| 3DP-00313 | 10mm | 16mm |
| 3DP-00314 | 11mm | 16mm |
| 3DP-00315 | 12mm | 19mm |
| 3DP-00316 | 13mm | 19mm |
| 3DP-00317 | 14mm | 19mm |
| 3DP-00318 | 15mm | 19mm |
| 3DP-00319 | 16mm | 22mm |
| Holders are produced with 0.020" clearance (larger on diameter) | | |



SECTION A-A



| | | | | | |
|----------|------|----------------------------------|-----------|--------|-----------|
| | | PROJECT RedShift Fabrications | | | |
| | | TITLE ToolDock - SMCHM 4 | | | |
| APPROVED | | SIZE | CODE | DWG NO | REV |
| CHECKED | | B | | | |
| DRAWN | J.D. | 1/6/2026 | SCALE 1:1 | WEIGHT | SHEET 1/1 |